



CABANA DOOR

INSTALLATION INSTRUCTIONS

OUT-SWING AND IN-SWING

Note: This unit has been shipped pre-hung with threshold attached. Regardless of the direction of swing, all doors are installed from the exterior.

Step 1: With the door in the closed position, dry fit unit into opening to ensure proper fit before applying any sealant. Shim and level the threshold, if additional adjustment is needed, it can be detached from the frame. When using adjustable sweep, jambs may need to be trimmed to provide an even reveal at the threshold.

Important: Maintaining plumb, level, and square during installation is essential to the proper operation of the unit.

Step 2: Z-Bar Frame: Carefully remove the fastener cover from the z-bar flange to expose the pre-punched installation holes.
Box/Equal Leg Frame: Skip to step 3.

Step 3: Remove unit from opening and caulk the outside perimeter of opening and along the floor where the threshold goes with the appropriate, approved sealant.

Step 4: Set the unit by seating the threshold first. Then swing the rest of the unit up into the opening. Shim and level the threshold first, then get the jambs plumb, level and true.

Step 5: Z-Bar Frame: Install fasteners in the pre-punched holes of the Z-Bar flange temporarily holding the frame in place.
Box/Equal Leg Frame: Skip to step 6.

Step 6: From the inside, shim any gap between the opening and the door frame at each hinge location. Open the door and install fasteners in the pre-punched installation holes at each hinge location (Illustration A) starting from the top down. Initially, screws may be lightly fastened until equal reveal and good door operation is established. Close the door and check the reveal on the lock jamb side.

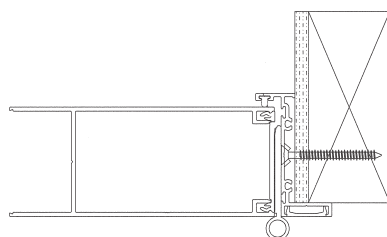
Step 7: Open the door and install the remaining fasteners in the pre-punched holes. Be sure to shim any gaps between the opening and the door frame at each anchor location.

Step 8: Replace the z-bar fastener cover.

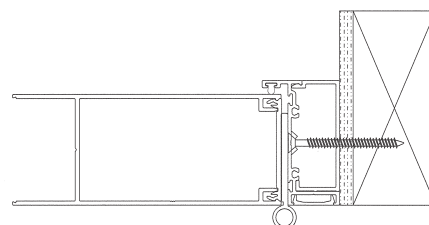
Step 9: Tighten any loosened fasteners.

Step 10: Seal any gaps or joints between frame and opening as needed.

Step 11: Install hardware according to the manufacturer's specifications and adjust strike plate(s) as needed.



Z-bar Frame



Equal Leg/Box Frame

Illustration A